



GMT MONTHLY MEMBERSHIP PROGRESS REPORT

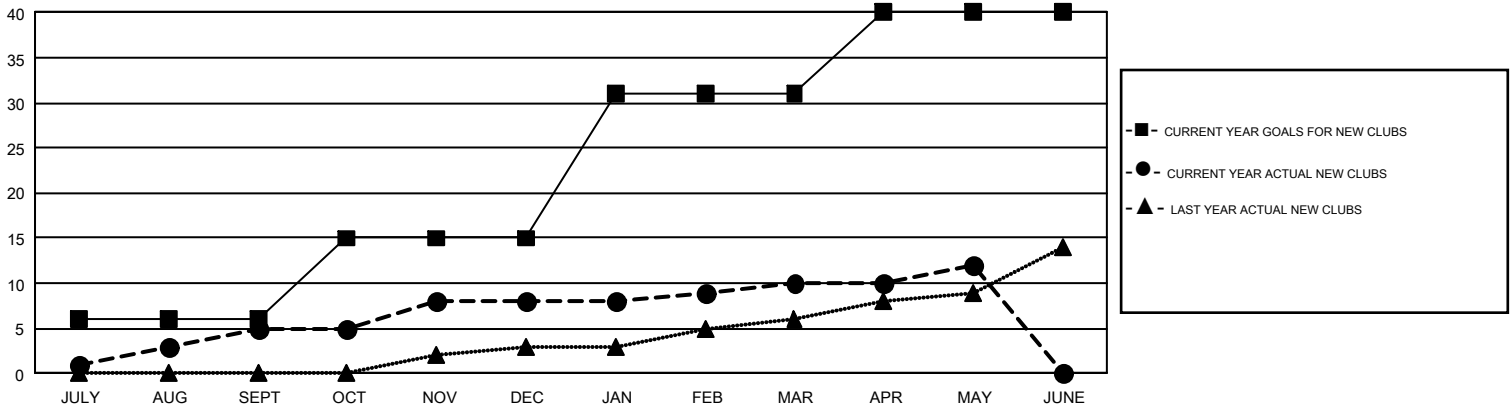
Results as of: 5/31/2019

GAT Constitutional Area 2

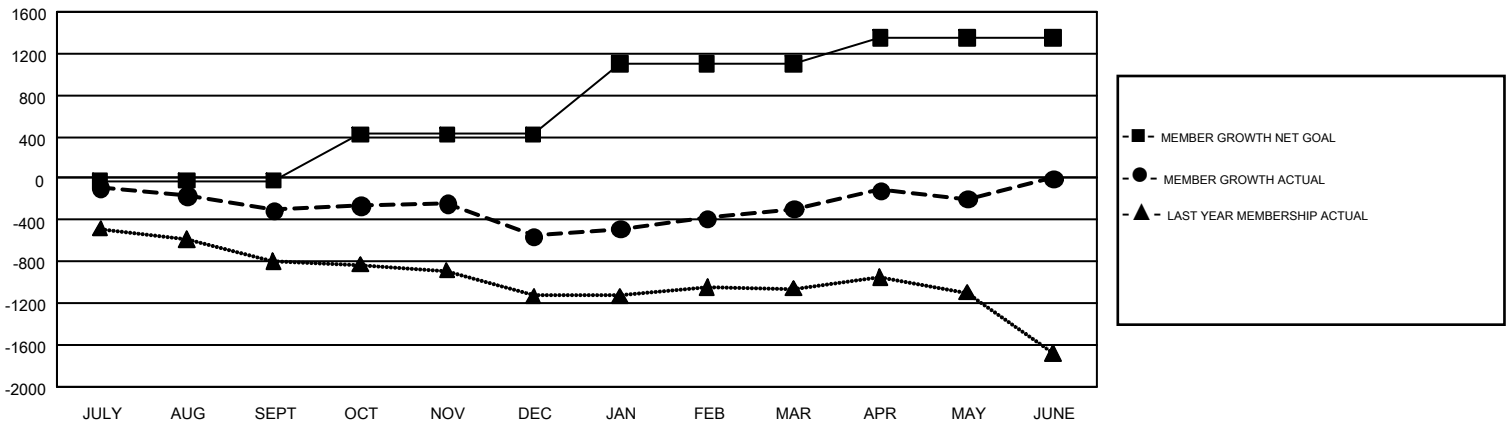
REPORT DOES NOT INCLUDE CLUBS IN UNDISTRICTED AREAS.

Clubs				Members			
RESULTS FOR 2018-2019				RESULTS FOR 2018-2019			
QUARTER	NEW CLUB GOAL	NEW CLUBS	DROPPED CLUBS	QUARTER	MEMBER GROWTH NET GOAL	MEMBER GROWTH ACTUAL	DROPPED MEMBERS ACTUAL (including transfers)
JULY/AUG/SEPT	6	5	4	JULY/AUG/SEPT	-21	666	843
OCT/NOV/DEC	9	3	9	OCT/NOV/DEC	442	1,088	1,241
JAN/FEB/MAR	16	2	3	JAN/FEB/MAR	677	1,096	734
APR/MAY/JUNE	9	2	3	APR/MAY/JUNE	256	769	618

GOALS AND ACTUAL NEW CLUBS CUMULATIVE



GOALS AND ACTUAL MEMBERS CUMULATIVE



DROPPED CLUBS: 19	968 CLUBS OF 1,624 ADDED 1 OR MORE NEW MEMBERS	GENDER DISTRIBUTION MALE 26,186 (67.63%) FEMALE 12,531 (32.37%)
DROPPED MEMBERS DECEASED 512 CLUB CANCELLED 63 OTHER 2,859 TOTAL 3,434	CLICK HERE FOR CUMULATIVE MEMBERSHIP DATA	TOTAL FAMILY UNIT MEMBERS 7,203 FAMILY MEMBERS PAYING HALF DUES 3,667